

Power Supply

Product code: 003525



Main Features

- Solar power unit for ALIZIA
- Allows sensor connection
- Bird spike

The tropical solar power unit for the ALIZIA wind sensor allows for an easy and sustainable deployment of wind measurement at 10m. Combined with a PULSIA station, it meets WMO recommendations for synoptic and climatological observation, as well as ICAO recommendations for meteorology dedicated to aviation.

The Tropical Solar Power Unit for the ALIZIA wind sensor is specifically designed to guarantee the continuity and reliability of wind measurements taken at a height of 10 meters.

Compact in size yet robust in design, this power unit is carefully dimensioned to fully meet the sensor's energy requirements while ensuring long-term durability in tropical environments.

Technology

Thanks to the amorphous silicon solar panel, the 6V NiMH battery charges continuously, even under cloudy conditions with diffuse sunlight.

Easy Installation

The low weight of the tropical solar power unit allows for easy installation at the top of the mast, avoiding wind load on the solar panel.

Cable accessibility is facilitated by a cover located at the side of the housing.

The mast mounting is done with a stainless steel collar, easy to install. To protect the solar panel from obstruction and potential damage, the unit is equipped with bird spikes.

Mains Power Supply

The tropical solar power unit can be connected to a 6V AC input if needed.

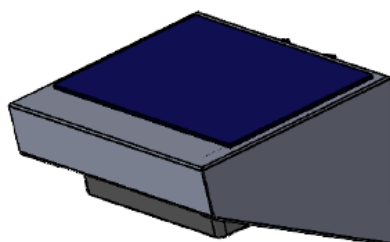
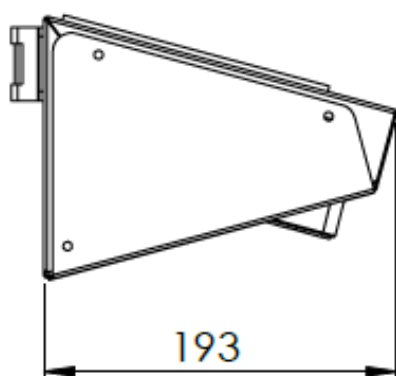
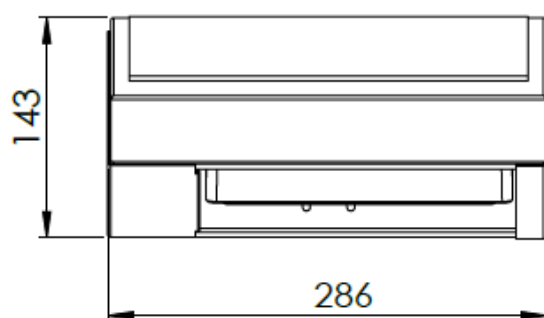
Technical Specifications

Support

Material	Stainless steel
Dimensions	(L)29 × (W)20 × (H)15 cm
Weight (with battery)	4.4 kg
Weight (without battery)	3.7 kg
Mast mounting (for mast FB10 & AL10)	2 collars; Ø min/max: 80/120 mm

Housing

Material	Cast aluminum
Dimensions	(L)20 × (W)10 × (H)8 cm
Cable glands	2 × M8; Ø 3 to 5 mm brass IP68 1 × M12; Ø 6.5 to 8 mm brass IP68
Connector	Binder M12—8 pin



Solar Panel

Dimensions	260 × 150 mm
Power	1.1 W
Technology	Amorphous silicon
Tilt angle	15°

Product code: 002446

Battery 6V / 6Ah

Technology	NiMh
Voltage	6 Volts
Nominal capacity	6 Ah
Dimensions	(L)160 × (W)33 × (H)60 mm
Weight	700 g
Connector	Angled Binder plug M8 (4 pin)
Operating temperature	-40 to +85°C

Connection to sensor

Connector brand	SOURIAU
9-way Connector	CL1F1201
Connector female contact	CM10SC10MQ (7 pin)
Sealing Gland Clipper	CL101021
Cable length	1.5 meters



Did you know?

Amorphous silicon can supply enough energy even under diffuse sunlight. It is also one of the most environmentally friendly photovoltaic technologies since it contains no heavy metals!



PULSONIC

48, rue de Versailles 91400 Orsay France
 Tel: +33 1 64 46 34 10 | Fax: +33 1 64 46 25 22
 Email: info@pulsonic.com | www.pulsonic.com
 SAS with a capital of €700,000 | RCS: Evry B 329 221 980

WWW.PULSONIC.COM
